

ASIA

- **MOL** made an oil and gas discovery in the Fedorovskoye Block in north-western Kazakhstan. Exploratory well Rozhkovskaya-U-10 was spud in during October 2007 and reached its target depth during April 2008. During the testing, the well produced significant volumes of high quality oil/condensate and gas from the primary targets. The result of the test carried out between 4344 and 4365 m was 8.24 million scf/D gas and 1,503 BOPD.
- **Sibir** announced that the crude oil production rate at its Salym fields has exceeded 125,000 BOPD. The fields are located in western Siberia and are operated by **Salym Petroleum Development**. The production brings Sibir's 50% share of production at Salym to more than 62,500 BOPD.
- **CNOOC** announced that Xijiang (XJ) 23-1 in the South China Sea started production. XJ23-1 is located in Block XJ04 in the Pearl River Mouth basin, 19 km east of the XJ23-4 oil field. The field is producing approximately 31,000 BOPD through 10 wells. CNOOC also completed its wildcat Ken Li (KL) 10-1-1 drilled independently in Bohai Bay. KL 10-1-1, drilled on Structure KL 10-1 of Laizhou Bay Sag, encountered oil pay zones of 56.8 m. The well was drilled to a total depth of 3148 m, with a water depth of 17 m.
- **Eni** made an onshore gas discovery in Pakistan with the Saqib 1A well, located in the Mubarak Exploration Block, in the southeastern province of Sindh. In the Mubarak Block, Eni holds a 38% stake, **Petronas Carigali Pakistan**, operator, 57%, and **Government Holding Private** has 5%. The well tested and flowed at 25 million scf/D of gas with 60 B/D of condensate.

AUSTRALIA

- **Shell Exploration NZ**, operator, completed New Zealand's natural gas and condensate field Pohokura off-

shore New Plymouth. The USD 1-billion Pohokura project, a joint venture between Shell (48%), **Todd Energy** (26%), and **OMV** (26%), developed a field with estimated reserves of 884 petajoules of natural gas and 44 million bbl of condensate.

- **New Zealand Oil & Gas** (NZOG) reported that the three Kupe field production wells have together test flowed a total of more than 1.15 million scf/D and a condensate flow of more than 15,000 B/D. The wells will be shut in as the Ensco 107 jackup rig prepares to move to the Momoho-1 exploration well location 6 km southeast of the Kupe platform. Kupe is located south of New Zealand's Taranaki peninsula. Partners are operator **Origin Energy** (50%), **Genesis Energy** (31%), NZOG (15%), and **Mitsui E&P NZ** (4%).

EUROPE

- **Lundin Petroleum** reported that its Morskaya-1 exploration well in the Lagansky Block, located in the northern Caspian Sea, encountered oil in the Aptian and Neocomian sandstone reservoirs. Minor amounts of gas were encountered in the overlying Albian reservoir. Morskaya-1 has been drilled to a depth of 2082 m.
- **Oilexco**, through its wholly owned subsidiary **Oilexco North Sea**, made a dual zone oil and gas condensate discovery at Moth in Block 23/21 in the UK central North Sea. The 23/21-6z Moth discovery well was drilled to a total depth of 14,616 ft. Oilexco earned a 50% working interest at Moth and serves as operator. Partners are **BG Group**, **Hess**, and **BP**. Hydrocarbon-bearing reservoir sands with a thickness of 605 ft were intersected in the Middle Jurassic Pentland and a further 219 ft were intersected in the Upper Jurassic Fulmar.

MIDDLE EAST

- **Tethys Oil** spudded Jebel Aswad-2 (JAS-2) on Block 15 onshore Oman. The well was drilled to further delineate the Natih A lime-

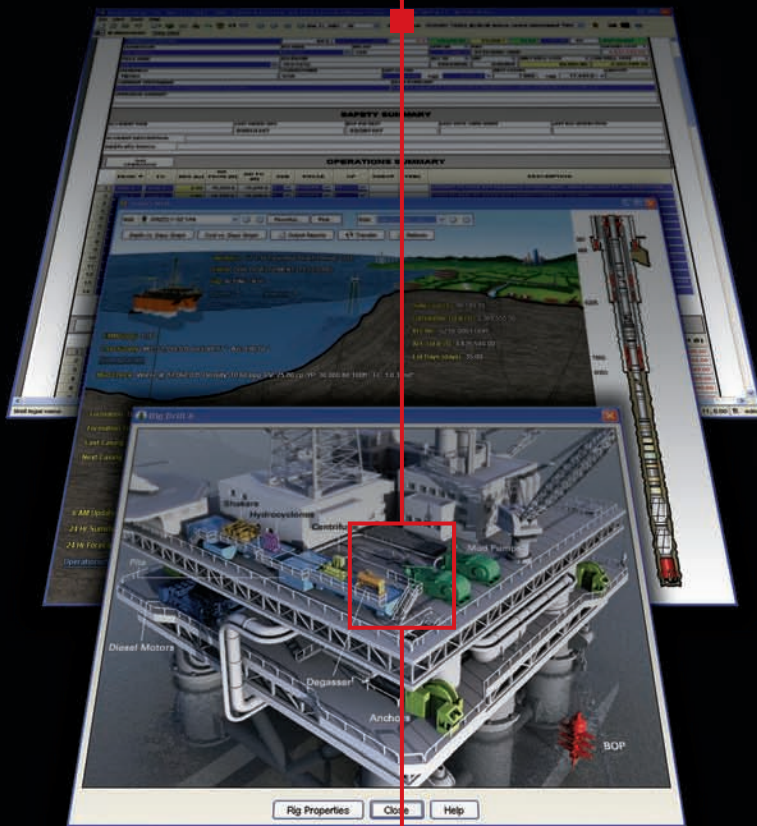
stone reservoir and is designed to optimize production rates. The well is expected to reach a final depth of 3200 m. At target depth, one or two horizontal sidetracks of a total length of an additional 1000 m are planned. Tethys is the operator with a 40% interest in Block 15 and **Odin Energy** with a 60% interest.

NORTH AMERICA

- **Pioneer Natural Resources** started production from the Oooguruk unit on Alaska's North Slope. The Oooguruk offshore field is located 250 km southeast of Barrow, 5 miles offshore Harrison Bay in the Beaufort Sea. Pioneer Natural Resources, operator, has a 70% interest and **Eni** holds 30%.
- **Shell** achieved first injection of water in the Ursa/Princess Waterflood project in the Gulf of Mexico (GOM). With a listed volume enhancement capacity of 30,000 BOPD, the waterflood is expected to extend the life of the field by 10 years. Shell is operator of this project with 45.39% stake, **BP E&P** has 22.69%, **Exxon Mobil** 15.96%, and **ConocoPhillips** has 15.96%.
- **BHP Billiton** announced that first oil and natural gas production has started from the Neptune development in the deepwater GOM. The single-column tension leg platform is designed to handle up to 50,000 BOPD and 50 MMcf/D of natural gas. Neptune, located approximately 195 km off the Louisiana coastline, is the first standalone deepwater production platform in the GOM operated by BHP Billiton installed in 1300 m of water on Green Canyon Block 613.

SOUTH AMERICA

- **Petrobras** and its partners, **BG Group** and **Repsol YPF**, made a light oil discovery in Block BM-S-9 located in the ultradeepwater of Santos basin offshore Brazil. The well, 1-BRSA-594-SPS (1-SPS-55), known as Guara, is located in the smaller area of the block, approximately 310 km off the coast of Sao Paulo and in 2141 m of water. **JPT**



Minimum effort.
Maximum results.
For all to see.

OpenWells® software dramatically simplifies—and streamlines—morning reports and equipment editing.

OpenWells® software enables rig supervisors to input daily well activity data quickly and accurately into their own company morning report. With no hyperlink needed, type directly into the report following company workflows to capture daily operations data. And perform true global data aggregation — capturing, formatting and distributing daily well site operations information. With highly detailed rig graphics, just click on “Equipment”, then enter data, and the update is complete.

Morning reporting just got easier. For more details, please visit us at www.halliburton.com/OpenWells1.

Landmark

HALLIBURTON