

Partnership in Achieving Common Goals in Safety

Philippe Armand
Total E&P Indonesie








Base 802899A1 (C00429) 11-02



TOTAL

Why Partnership?

- ▶ More complex activities → increased risks
- ▶ Increased manhours 
- ▶ Lost Time Injury Frequency – Company Contractor 
- ▶ Total Recordable Injury Rate – Company Contractor 

To improve our performances

The improvement should be targeted to all aspects

Including the ones involving Contractor

Working together hand in hand to create a safe workplace

CONTRACTOR HSE MS

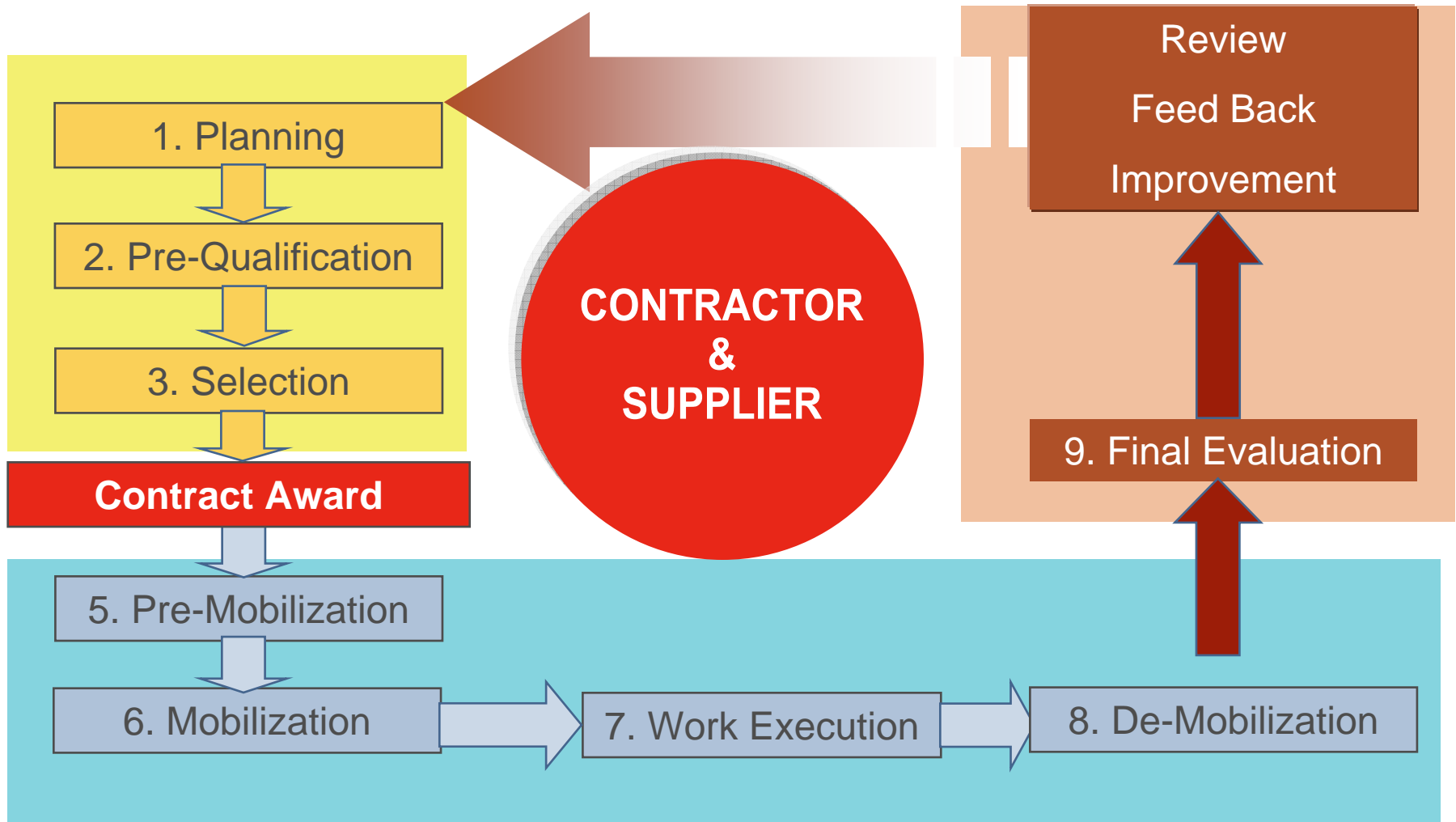


Figure 1 HSE Management of Contractors

PARTNERSHIP IN SAFETY

WORK PLANNING AND PARTNER SELECTION

▶ WORK PLANNING

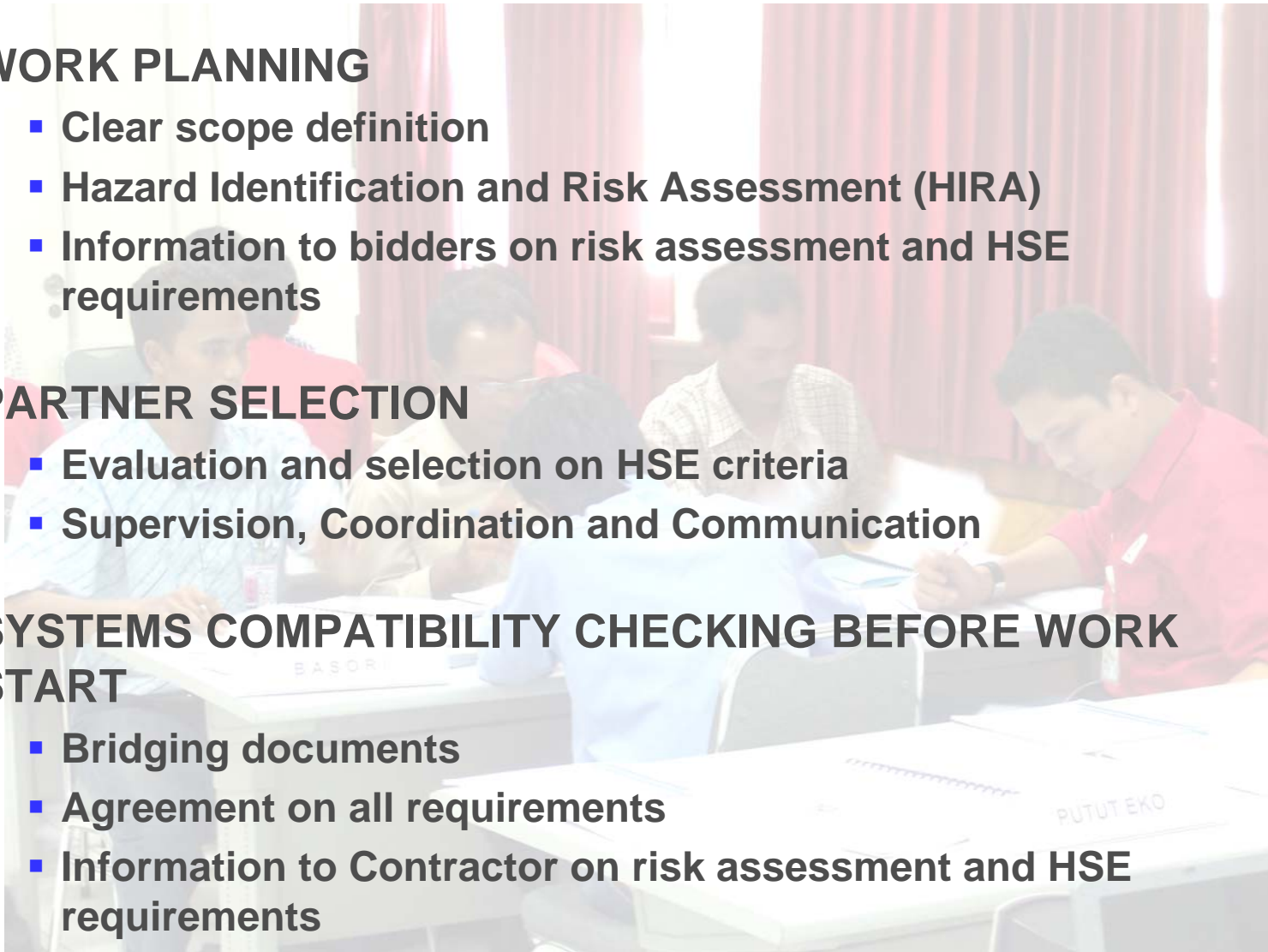
- Clear scope definition
- Hazard Identification and Risk Assessment (HIRA)
- Information to bidders on risk assessment and HSE requirements

▶ PARTNER SELECTION

- Evaluation and selection on HSE criteria
- Supervision, Coordination and Communication

▶ SYSTEMS COMPATIBILITY CHECKING BEFORE WORK START

- Bridging documents
- Agreement on all requirements
- Information to Contractor on risk assessment and HSE requirements



PARTNERSHIP IN SAFETY WORK PERFORMANCE MONITORING

COMMUNICATION AND COORDINATION

- HSE Induction at all levels
- HSE meeting involving Contractors
- HSE Information (feedback) shared with Contractors
- Communication between Company Site Manager and local work place
- Involvement of Contractors management and employees in HSE Company Campaigns

INCENTIVE PROGRAMS

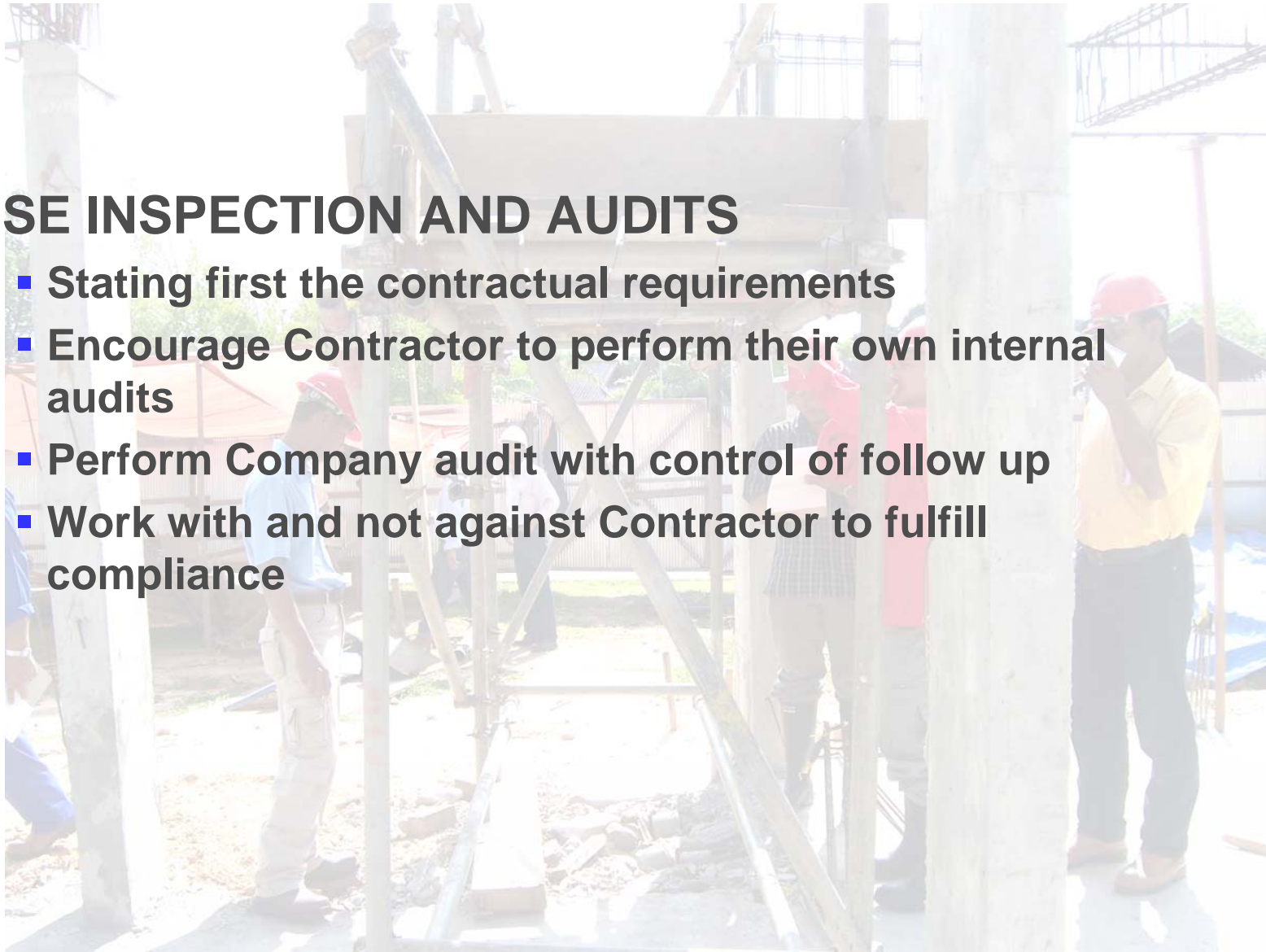
- Definition (KPI)
- Contractual and legal aspects



PARTNERSHIP IN SAFETY WORK PERFORMANCE MONITORING

► HSE INSPECTION AND AUDITS

- Stating first the contractual requirements
- Encourage Contractor to perform their own internal audits
- Perform Company audit with control of follow up
- Work with and not against Contractor to fulfill compliance



PARTNERSHIP IN SAFETY

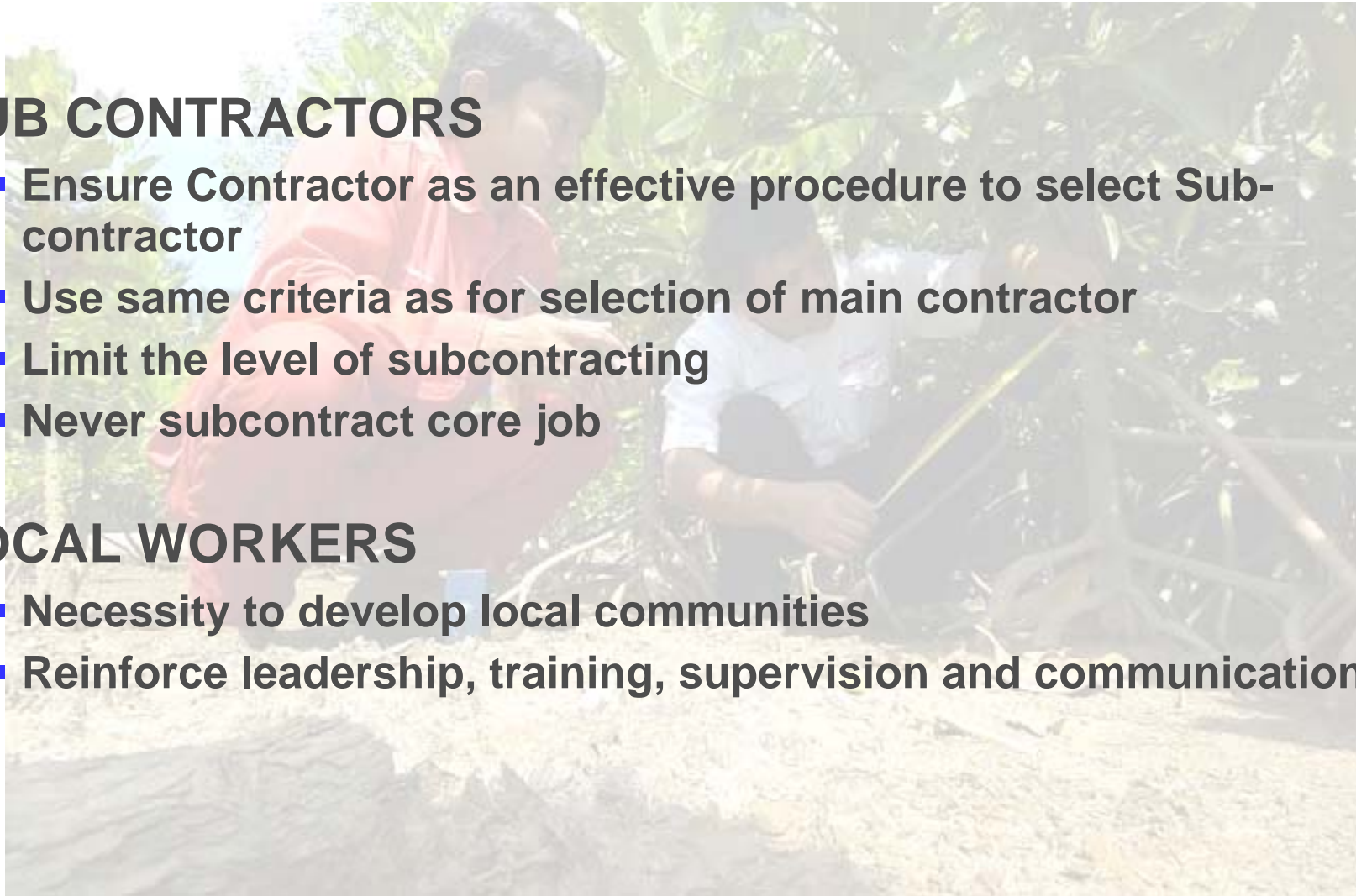
SUB-CONTRACTORS - LOCAL WORK FORCE

SUB CONTRACTORS

- Ensure Contractor as an effective procedure to select Sub-contractor
- Use same criteria as for selection of main contractor
- Limit the level of subcontracting
- Never subcontract core job

LOCAL WORKERS

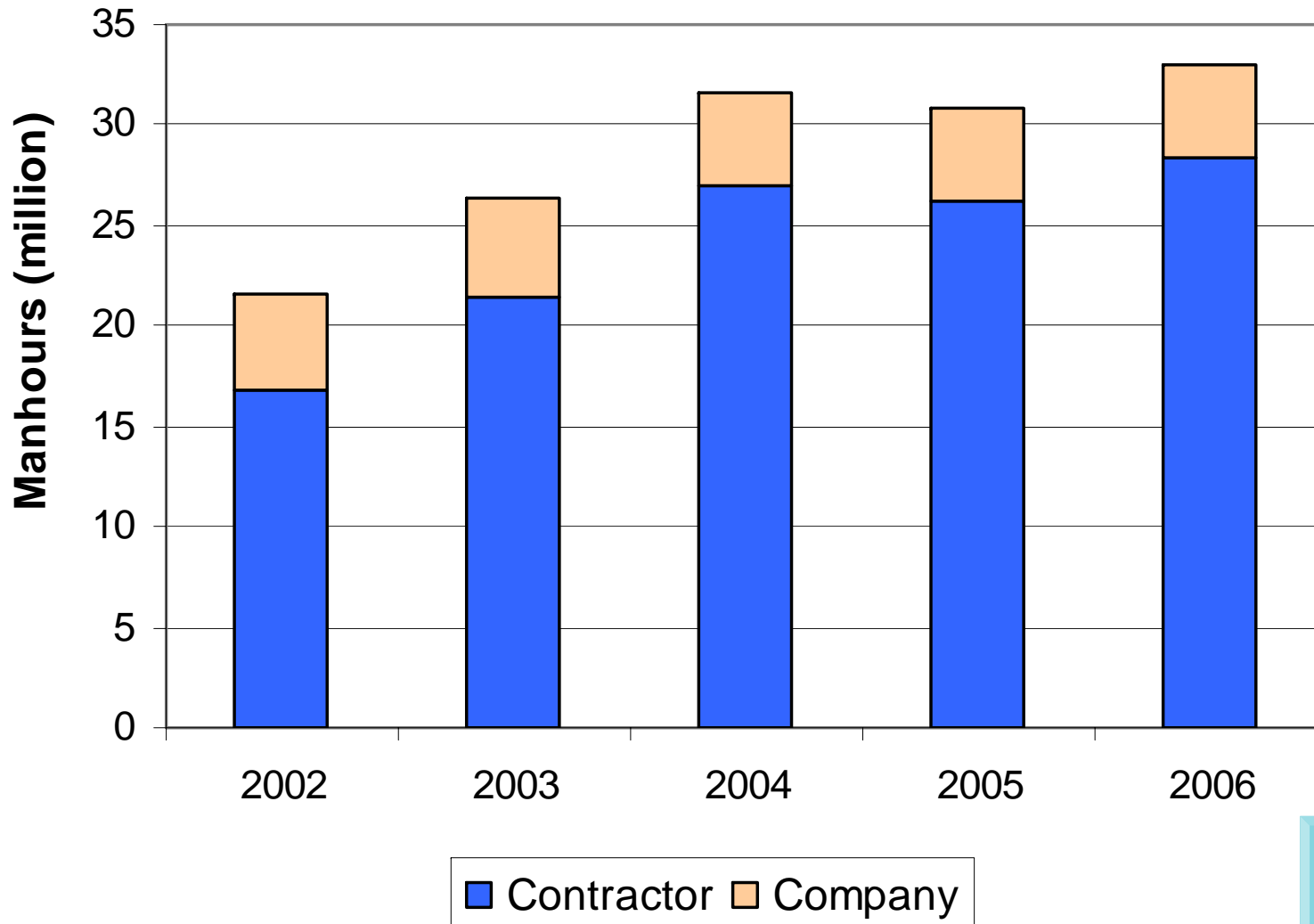
- Necessity to develop local communities
- Reinforce leadership, training, supervision and communication



A safer you is a safer me

THANK YOU
HAVE A SAFE DAY

INCREASING MANHOURS

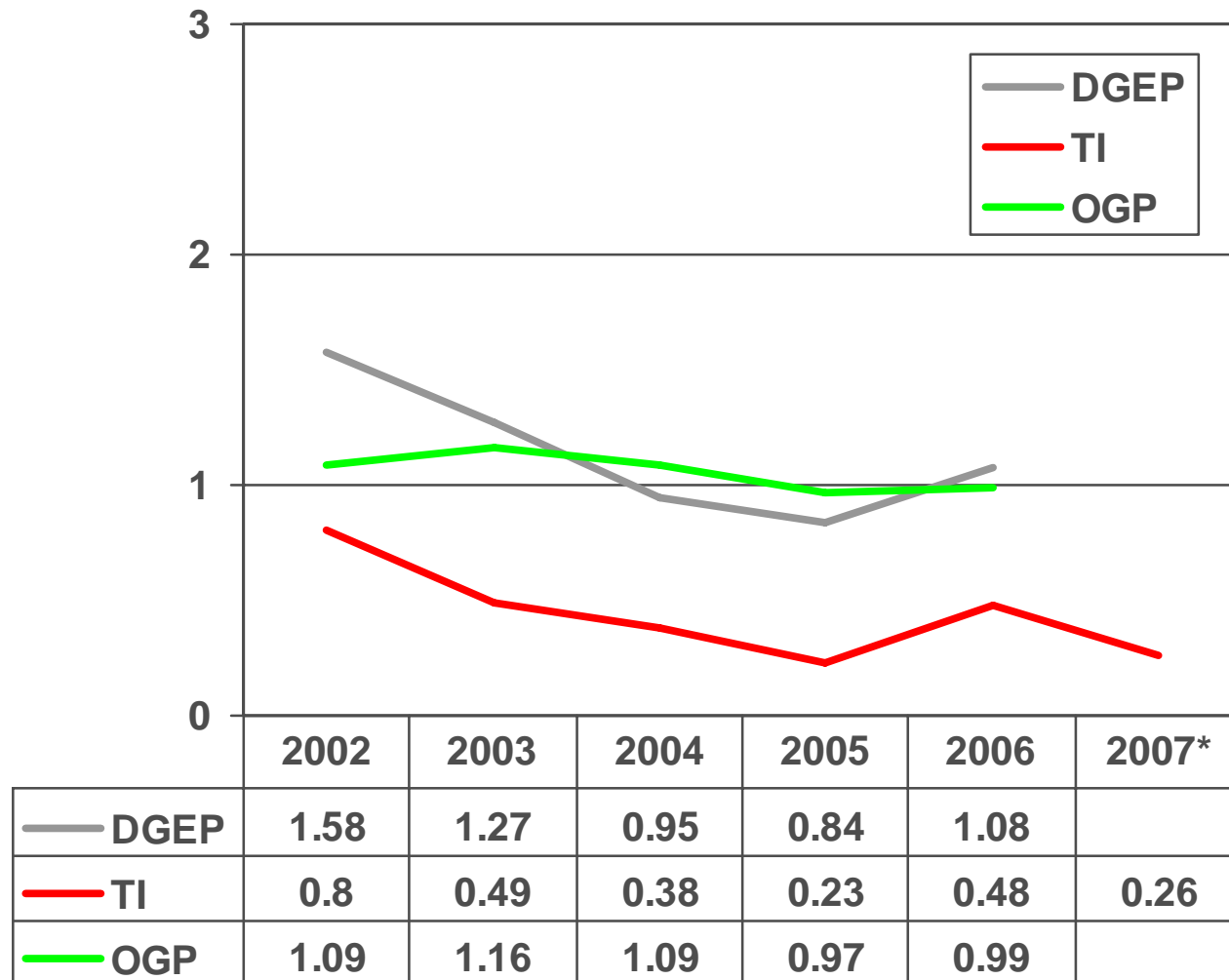


TOTAL E&P INDONESIA



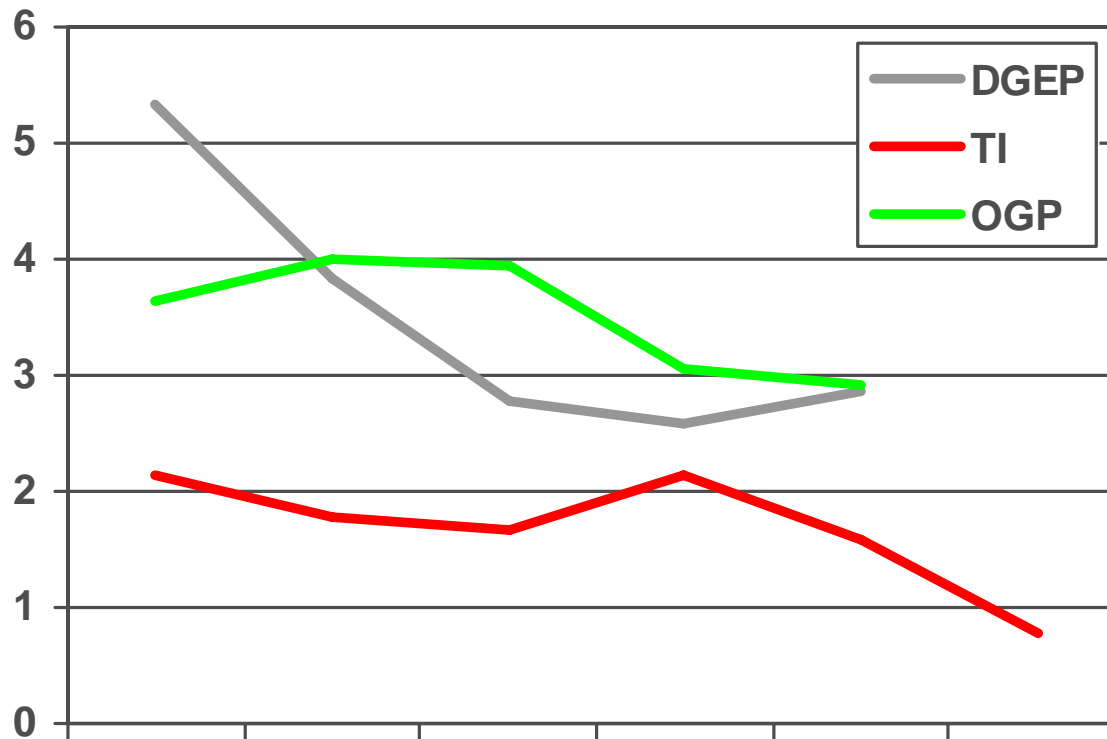
LOST TIME INJURIES (LTIF)

TOTAL E&P INDONESIA



TOTAL RECORDABLE INJURIES (TRIR)

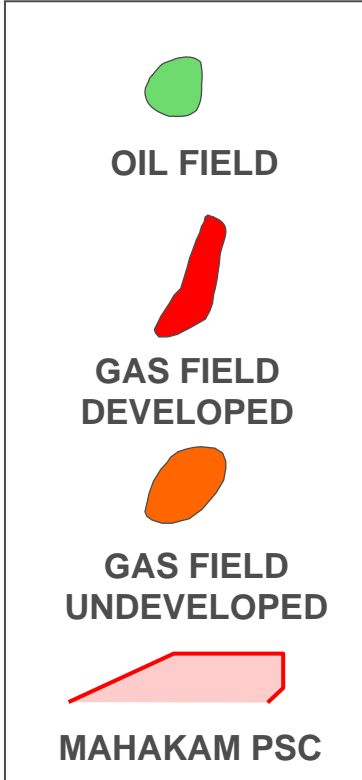
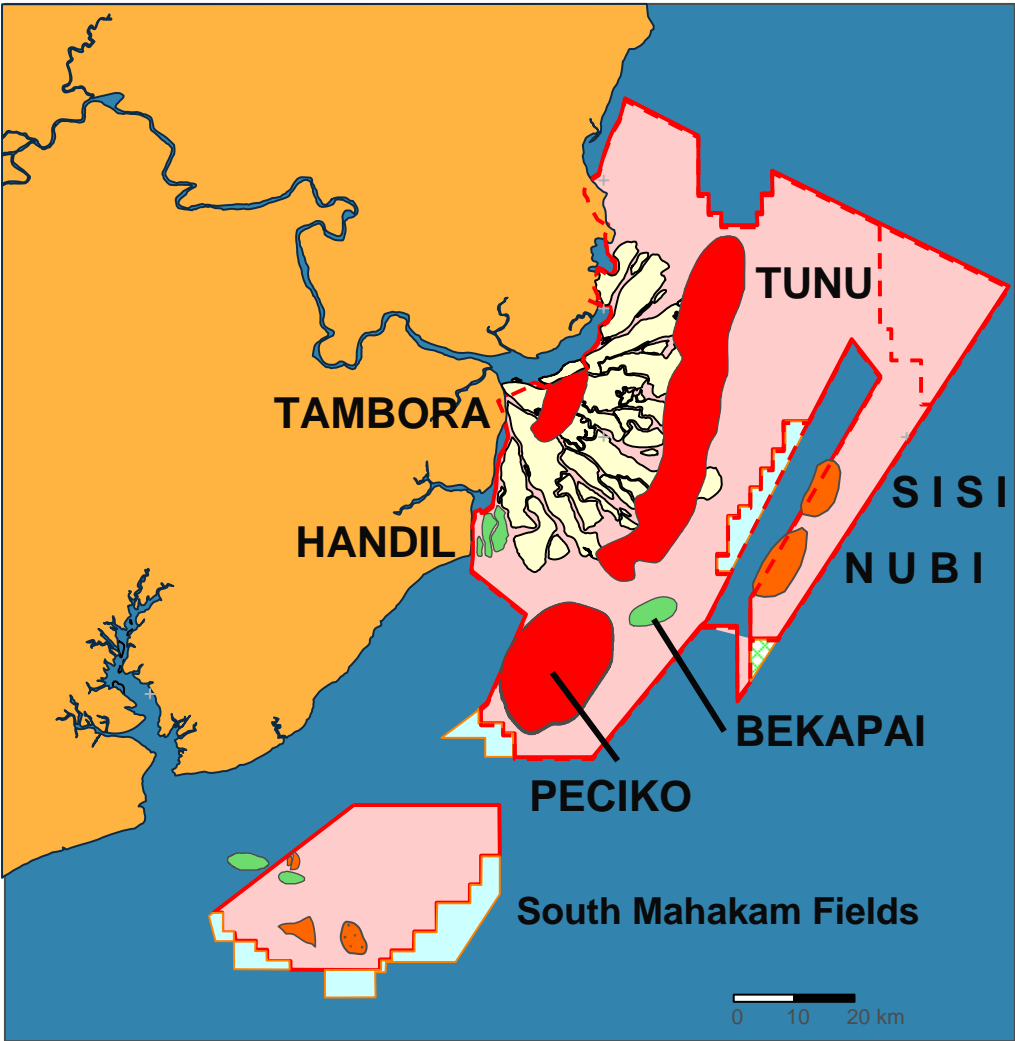
TOTAL E&P INDONESIA



	2002	2003	2004	2005	2006	2007*
DGE	5.32	3.83	2.77	2.59	2.85	
TI	2.14	1.78	1.68	2.14	1.57	0.78
OGP	3.63	4	3.94	3.05	2.92	



Total Indonésie - East Kalimantan Fields



Production History & Forecast (Kboe/d)

